

# CUCC Expo 2015

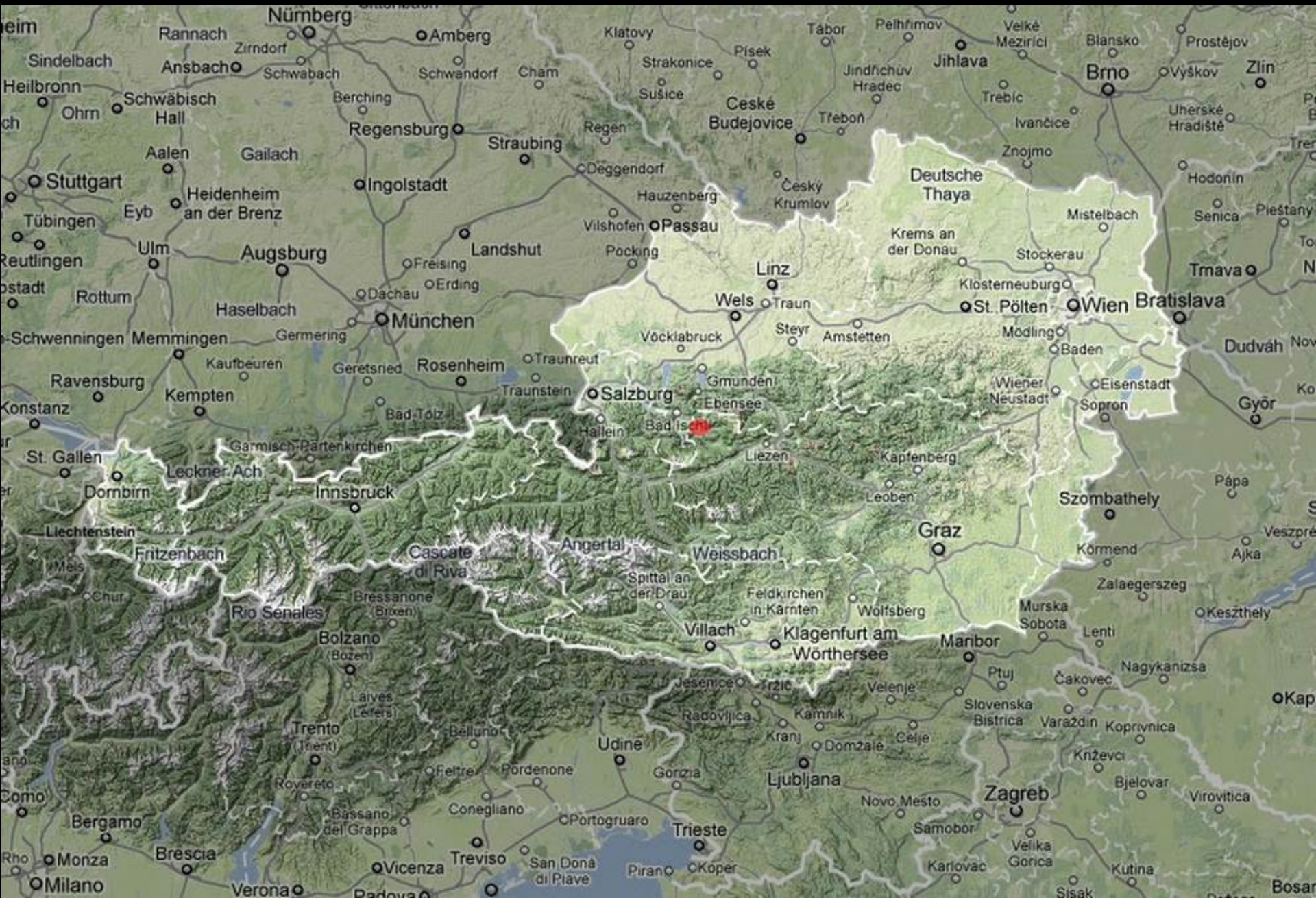


# Contents

- The set up
- In the beginning
- Tunnockschacht
- Balkonhöhle
- Gemsehöhle
- Donner und Blitzen  
höhle
- Next year











Wolfsberg

A9

St. Pankraz

Schonberg

Totes Gebirge

Vorderstoder

Elm

Hinterstoder

Altaussee

Grundlsee

Schrocken

Bad Aussee

Lawinenstein

Kamp

Pichl-Kainisch

Tauplitz

Bad Mitterndorf

E651

Weißenbach bei Liezen

Würschach

Stainach

E651

Aigen im Ennstal

Trautenfels





Wilpernig  
family at  
Gasthof  
Staud'nwirt,  
hosts of the  
CUCC  
expedition  
since 1983









DANGER OF DEATH  
KEEP OUT





























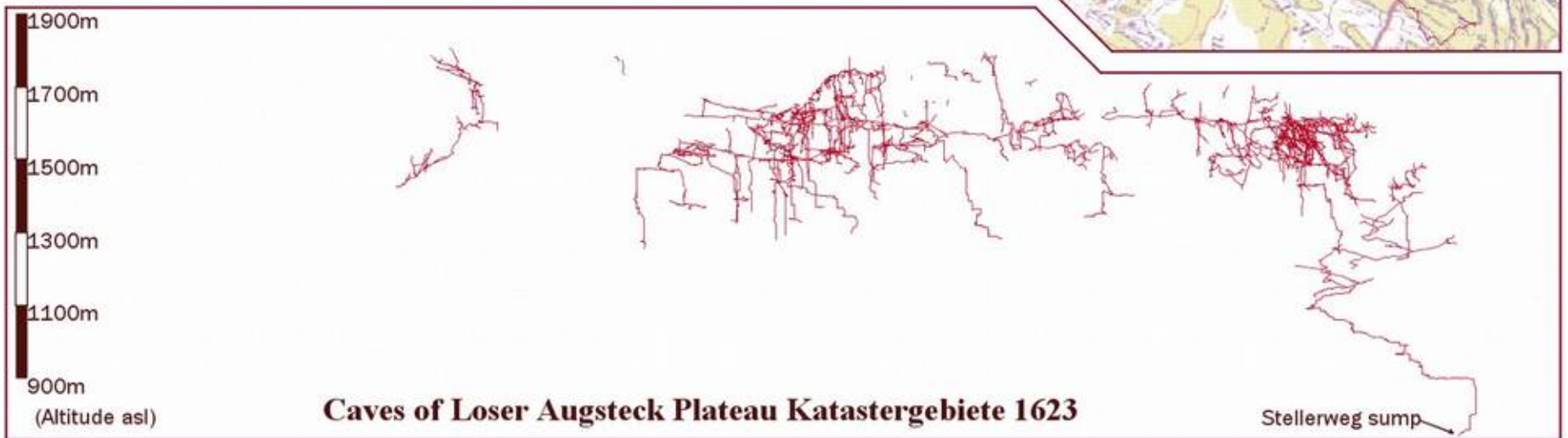
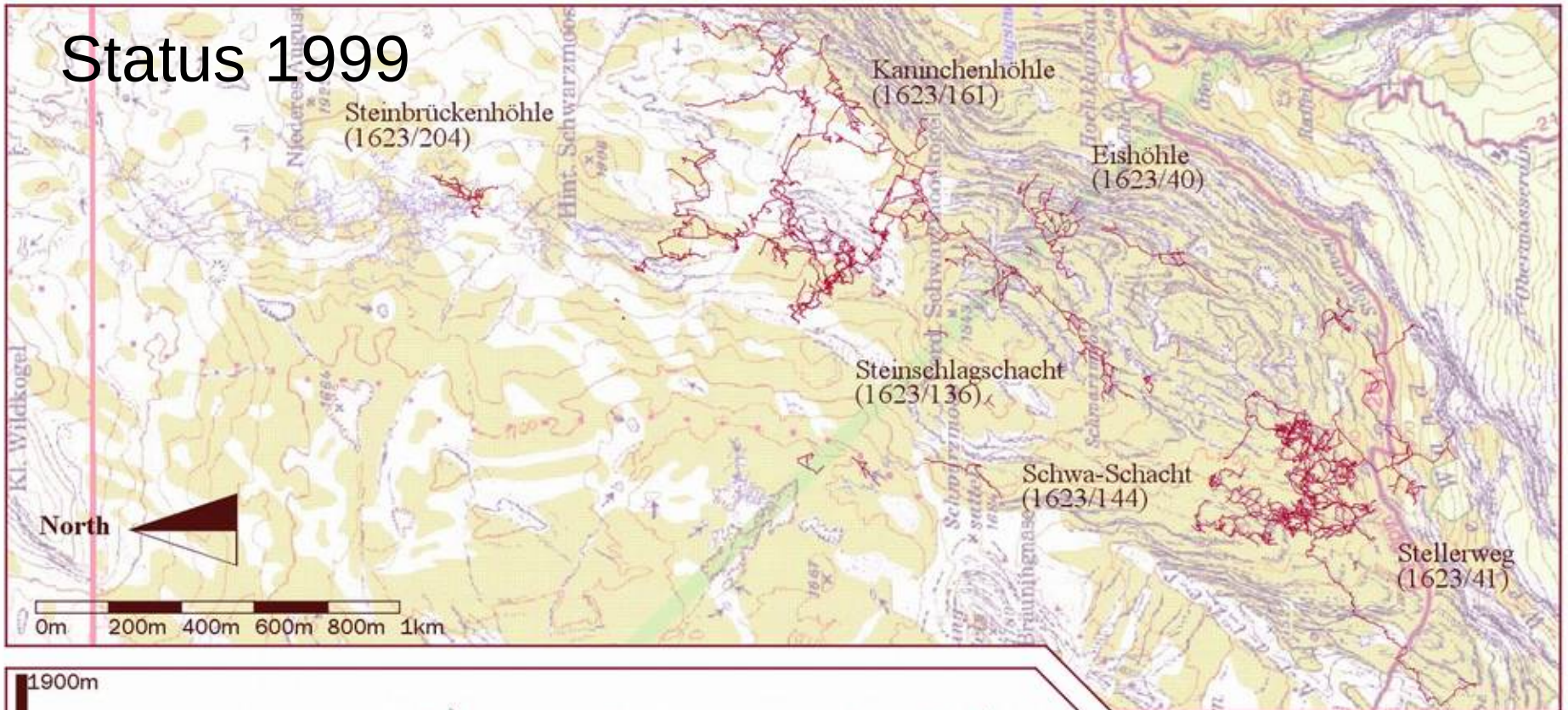








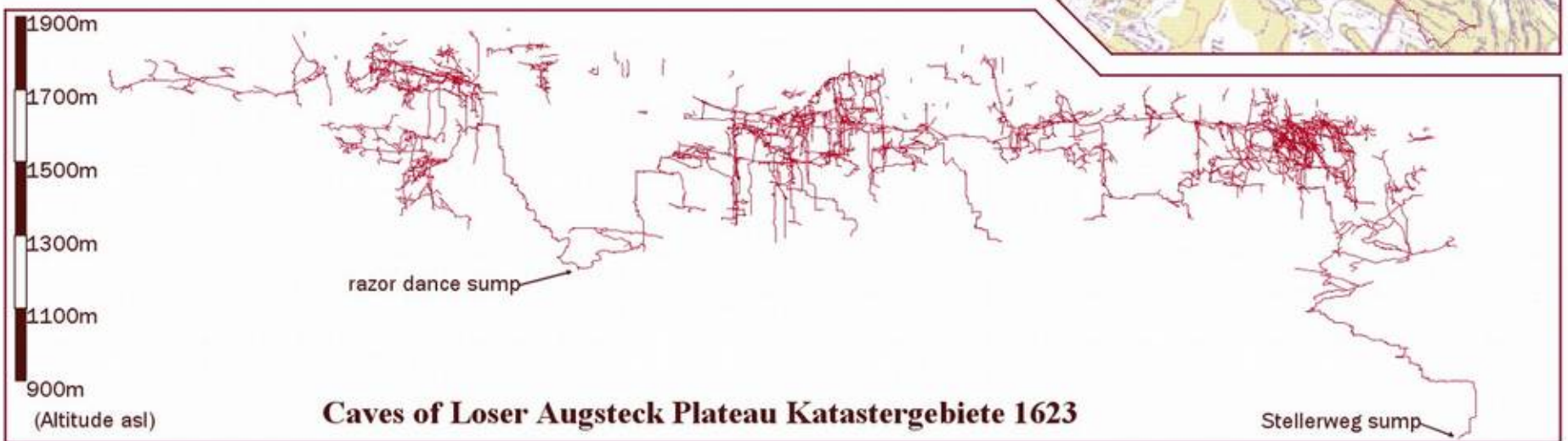
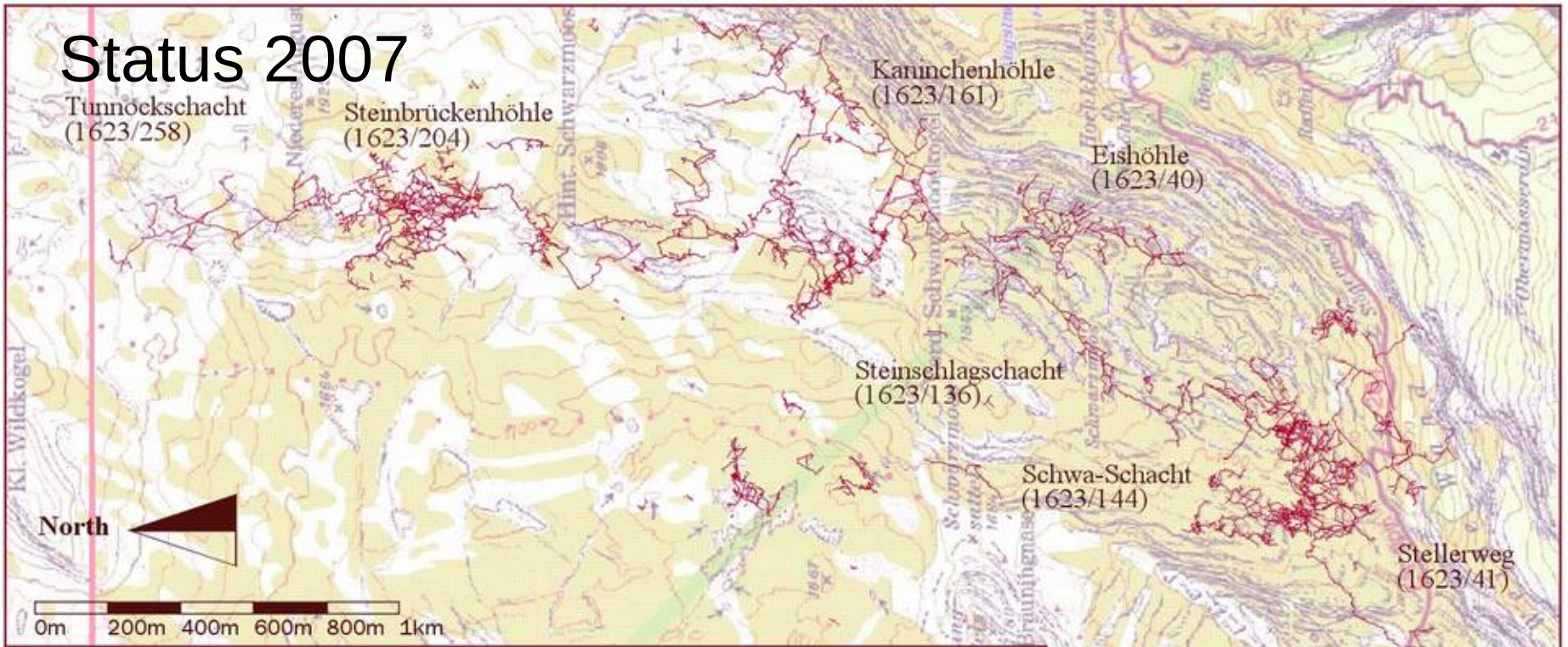
# Status 1999



**Caves of Loser Augsteck Plateau Katastergebiete 1623**

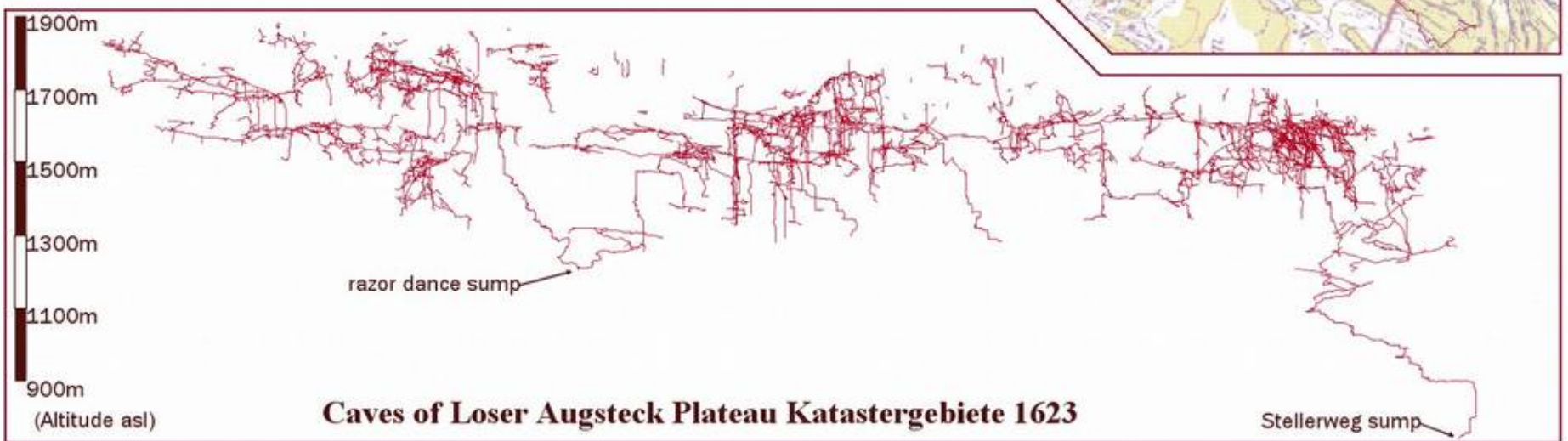
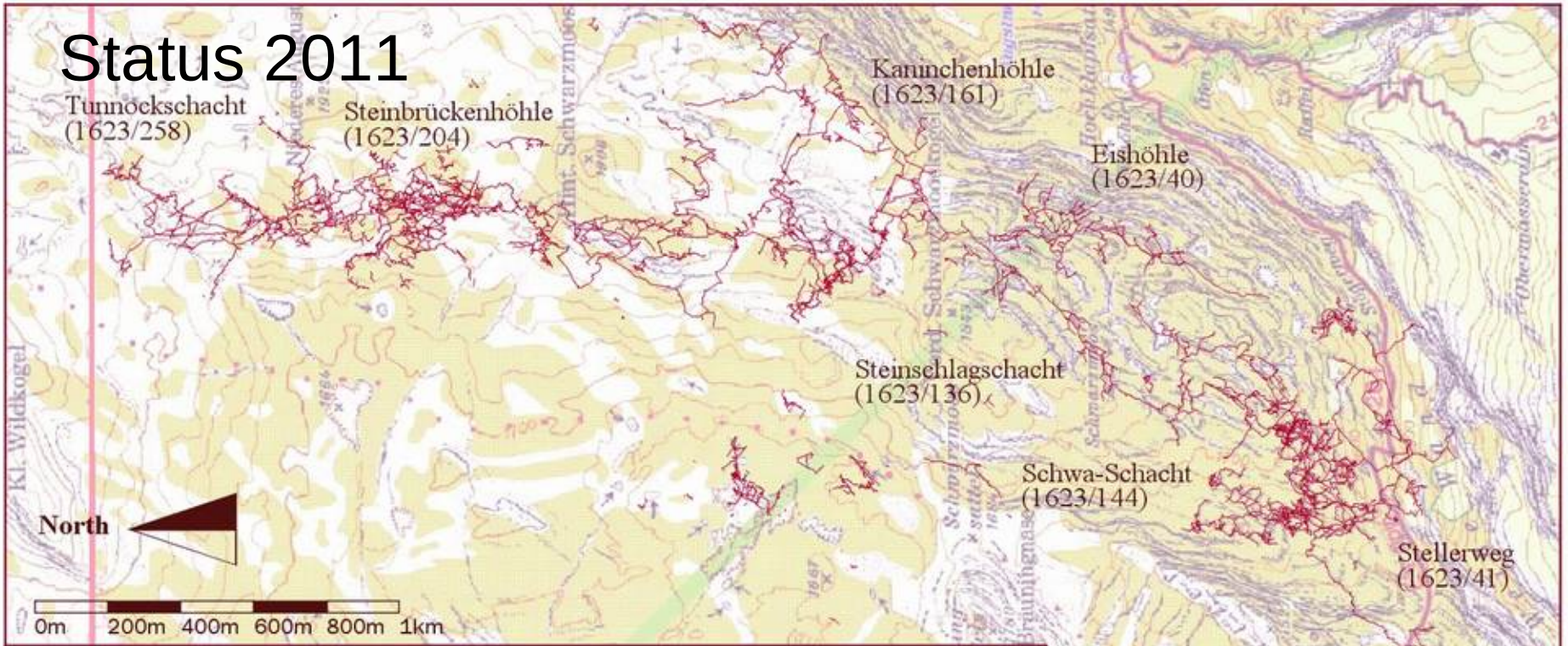


# Status 2007





# Status 2011









# Tunnock- schacht

- Part of SMK System
- 104.8km long
- 1104m deep
- 4th long and deep cave in the world









- String Theory,  
leading to:
- Number of the  
Beast
- Clayton's Cock  
Up















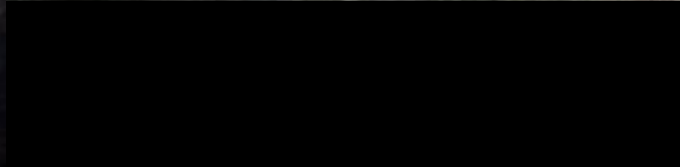
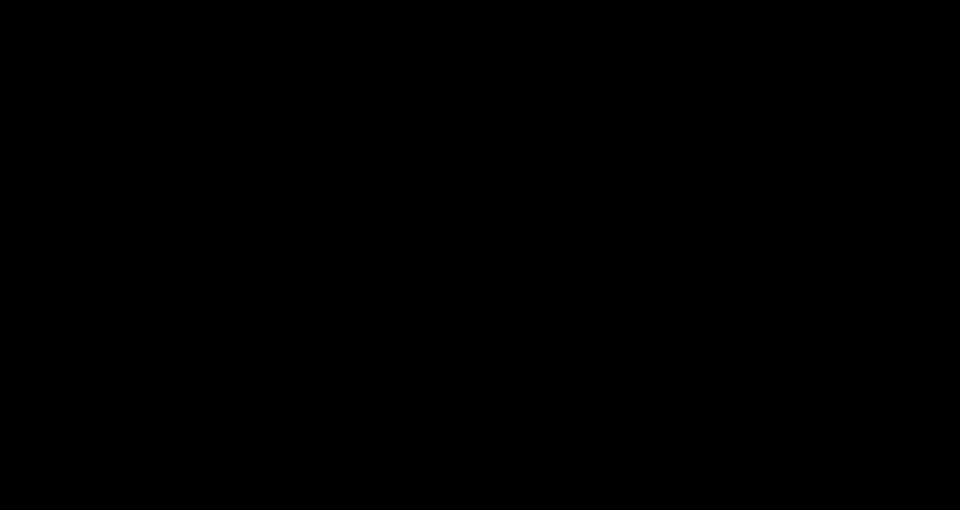














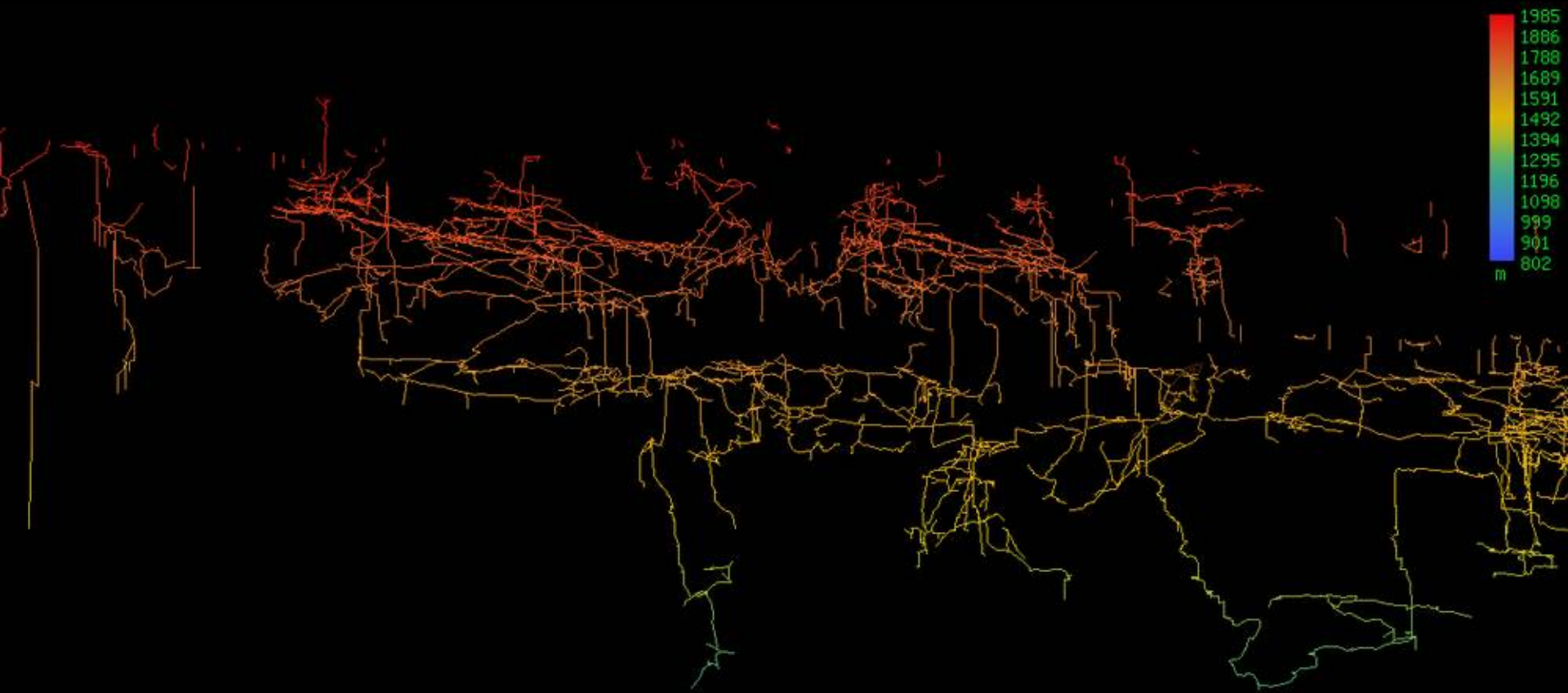




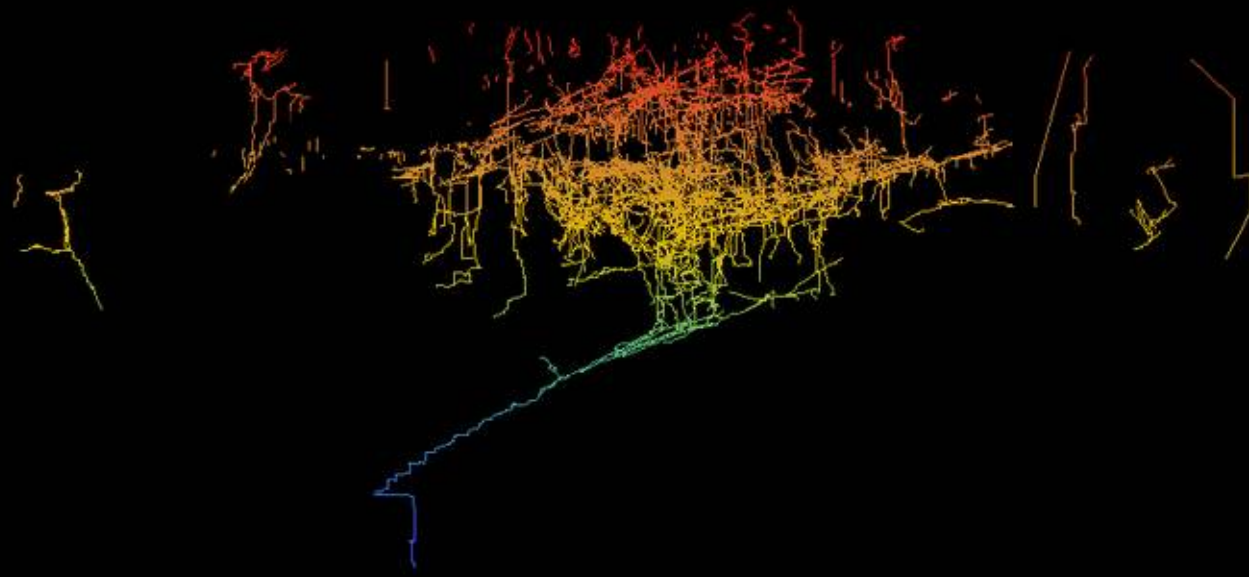


# Tunnocks Stats

- From 13km to 14km in length
- From 485m to 651m deep







# Balkonhöhle









- First identified in 2000, but not explored until 2014
- End of 2014  
3.2km long &  
150m deep





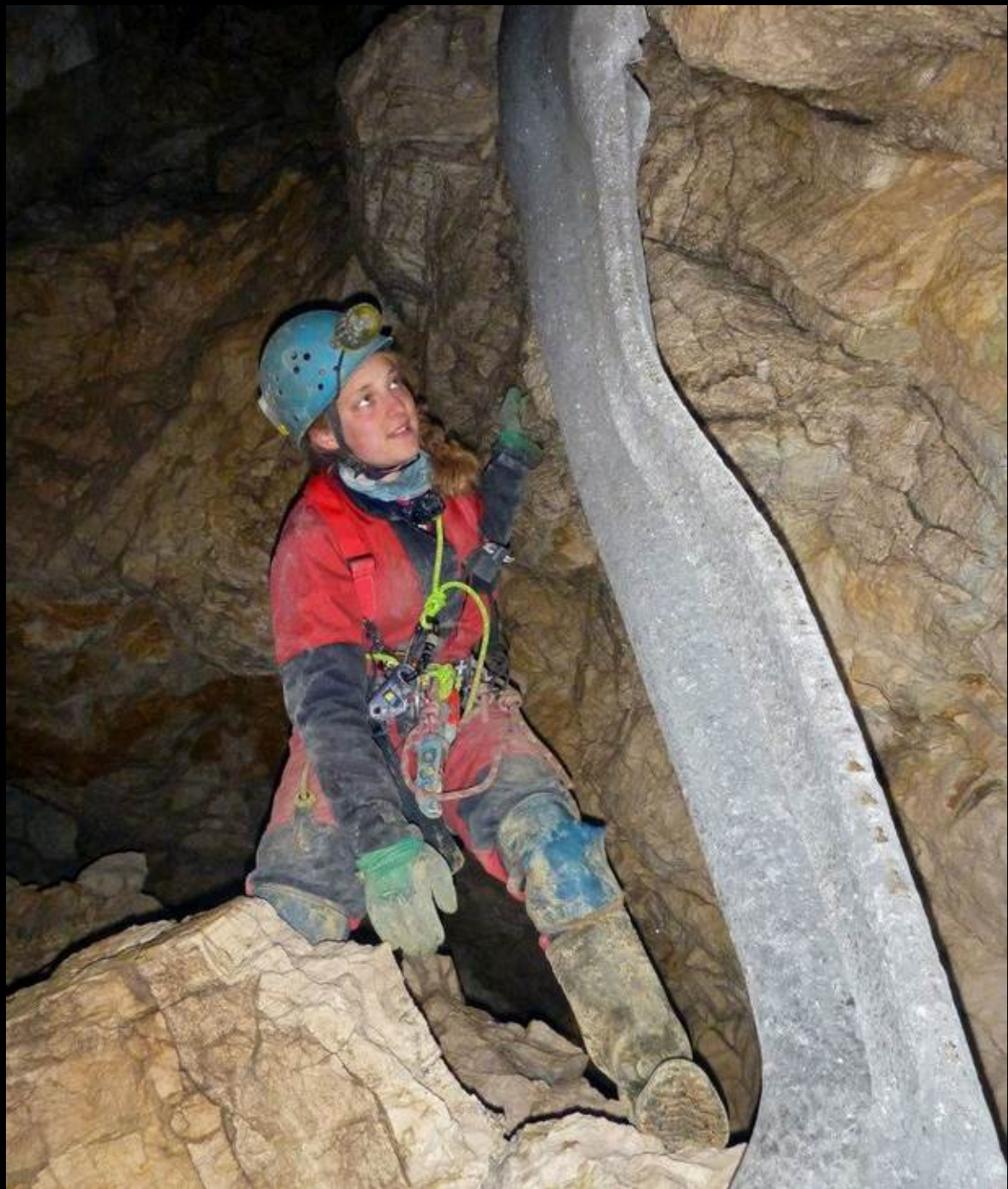








- Ice Cock Aven and the Frozen North
- Bipedal Passage
- Hilti-a-plenty







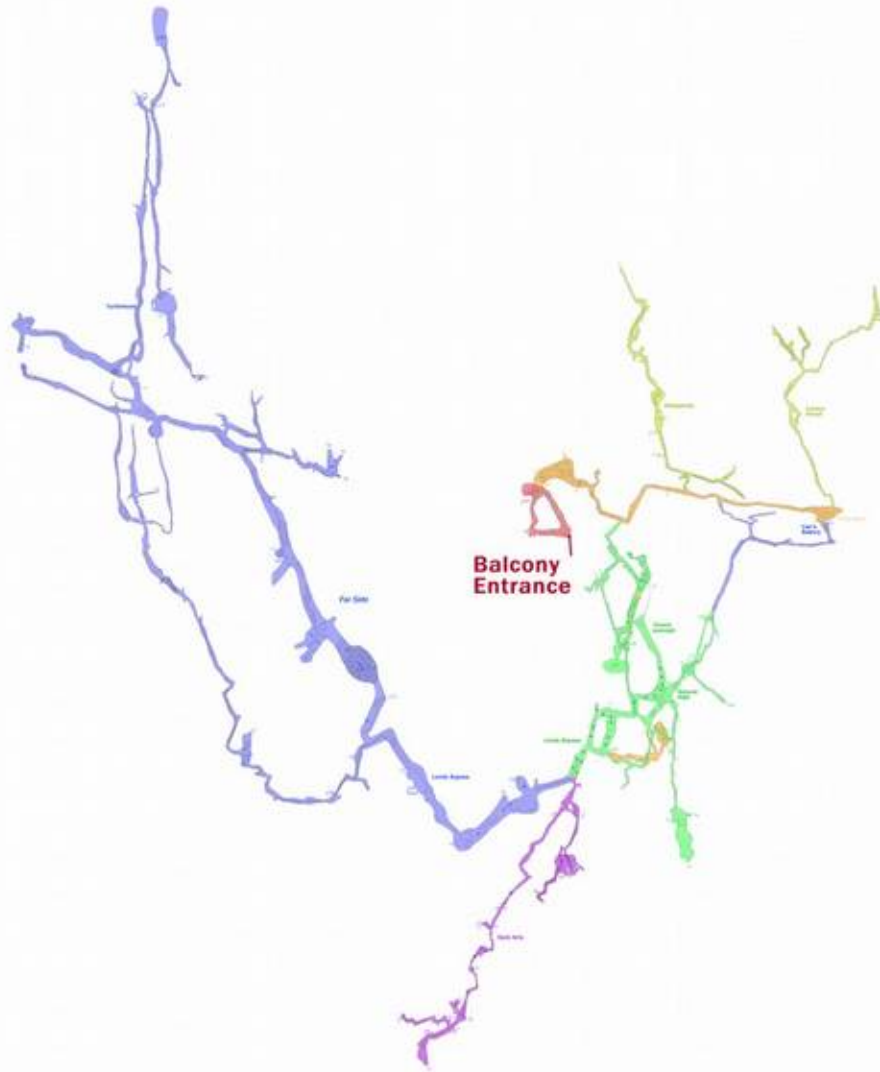












**Balcony hohle**  
explored in 2014 by CUCC



# Tunnocks

0m 50m 100m 150m 200m 250m

## Balcony hohle

Now 7km long  
(from 3.2km) &  
180m deep (from  
150m)

N84134.93  
E36658.27  
alt 1872m

N84134.93  
E36658.27  
alt 1877m

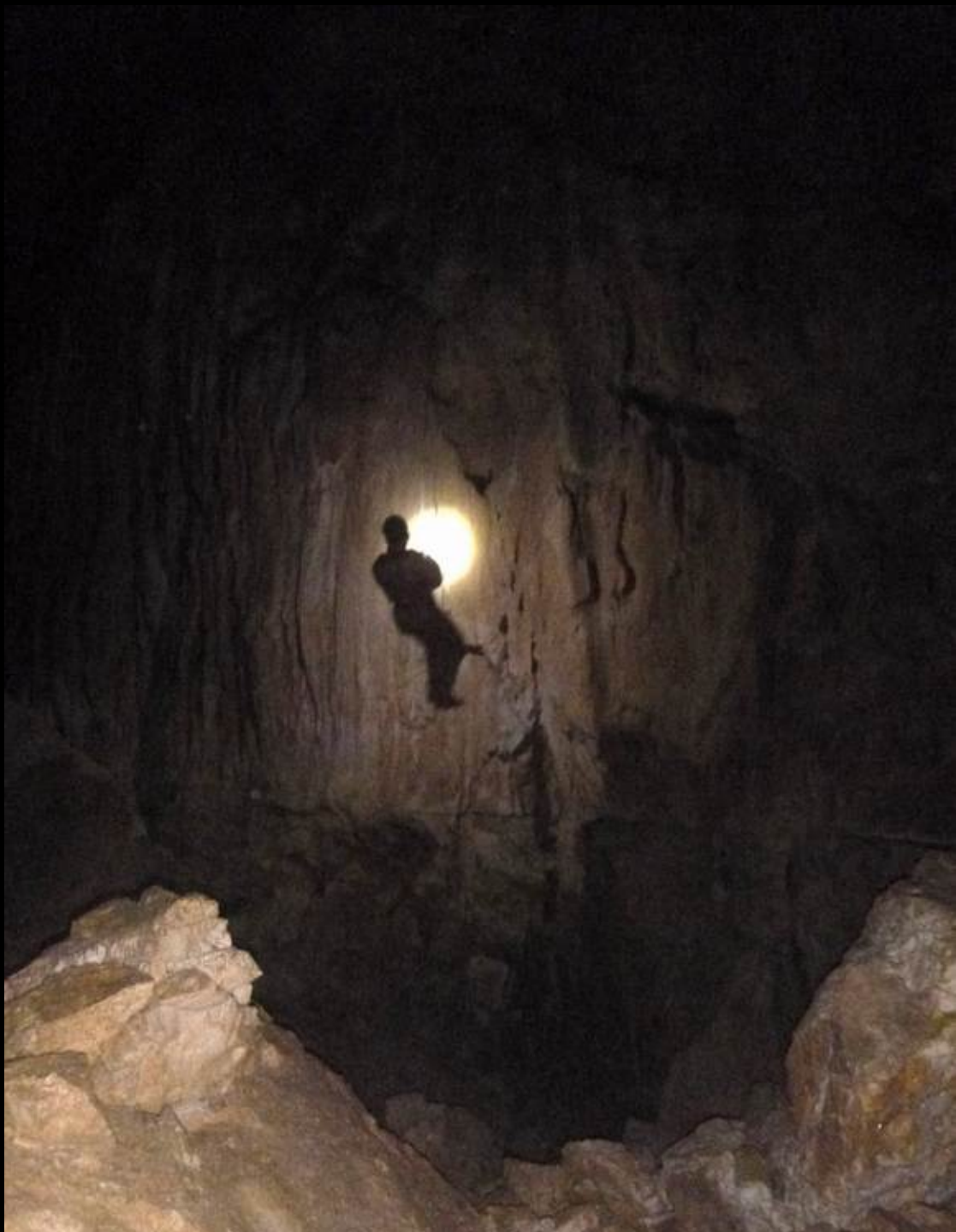
CONNECTION!!!





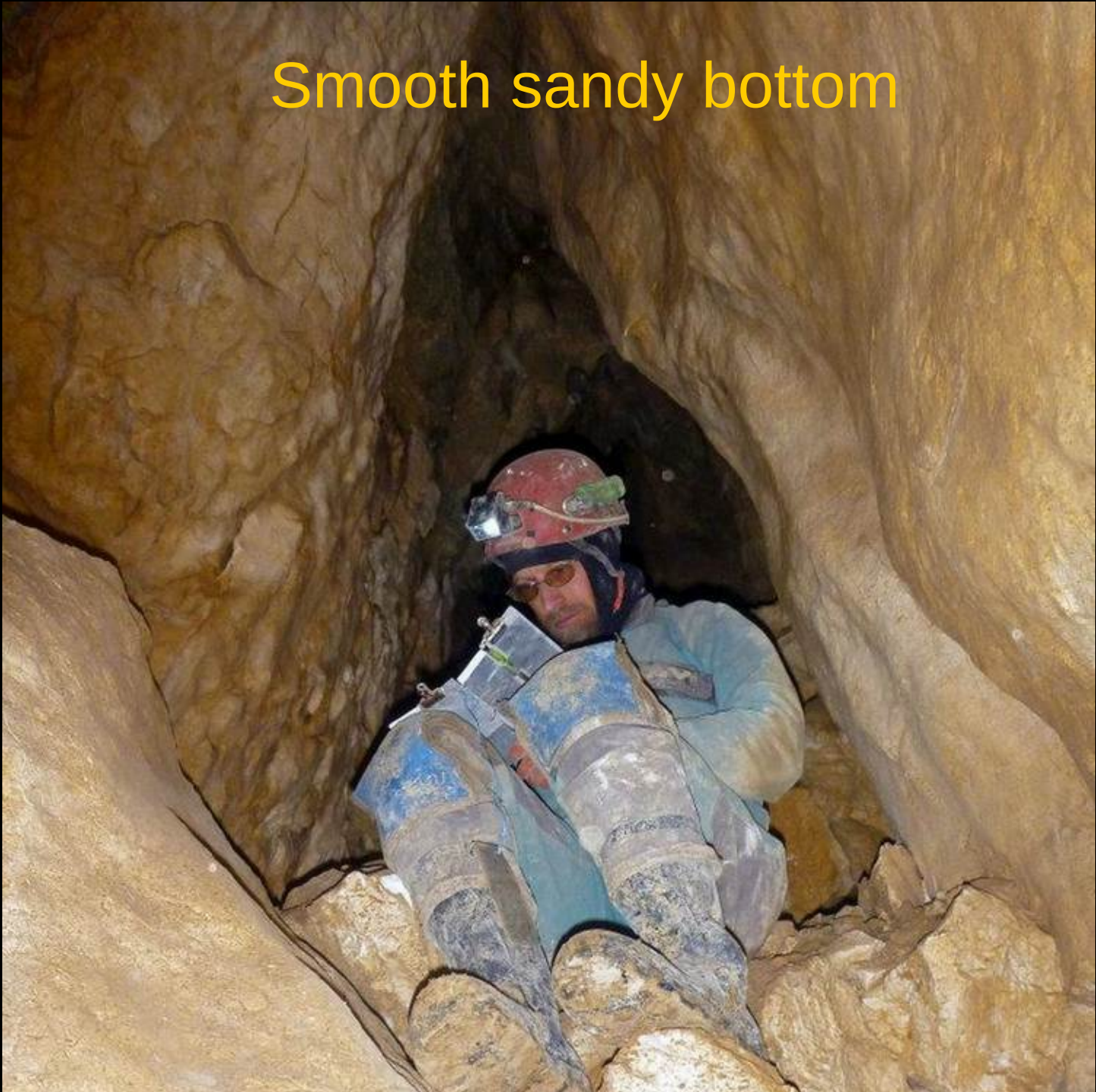
# Gemsehöhle

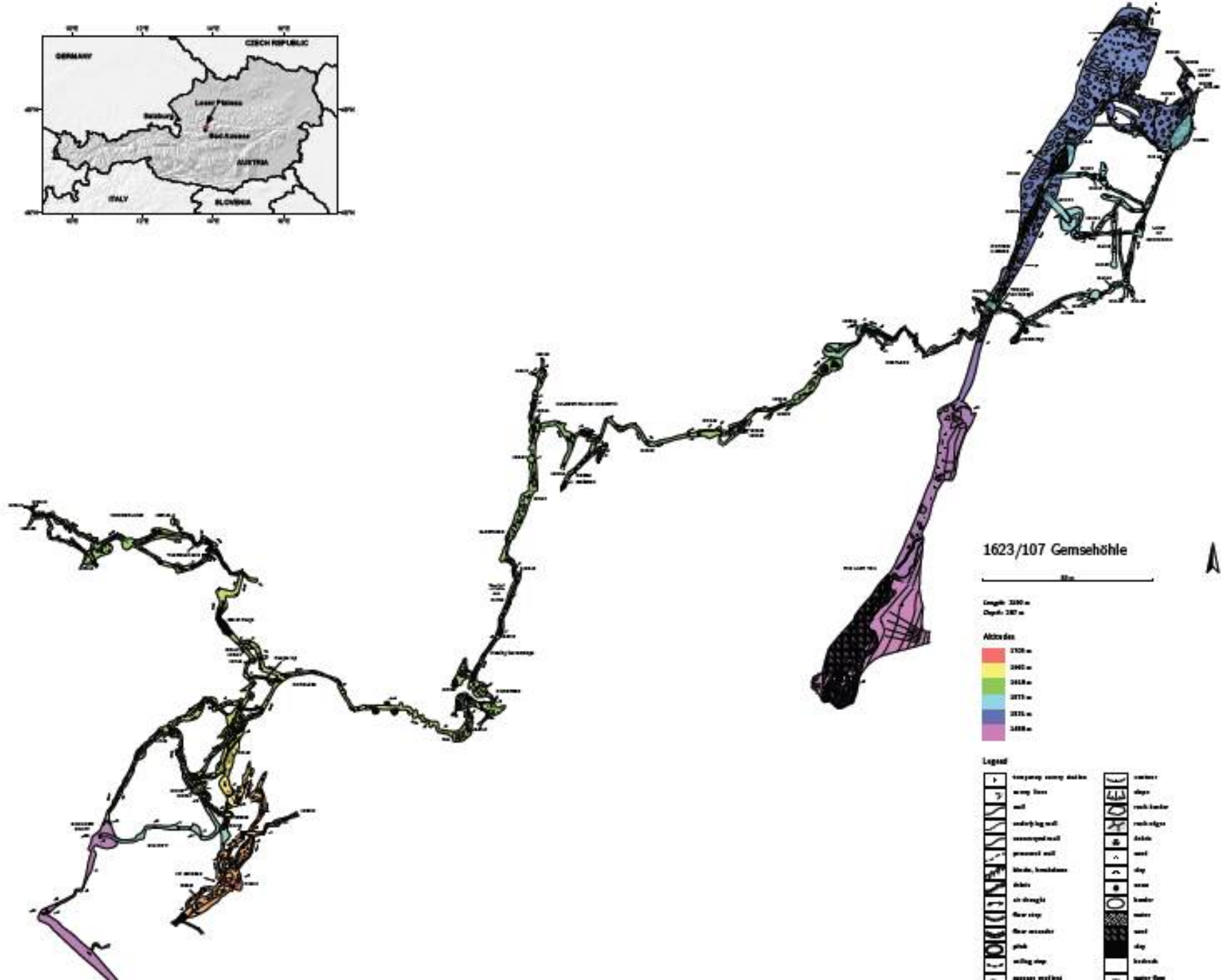




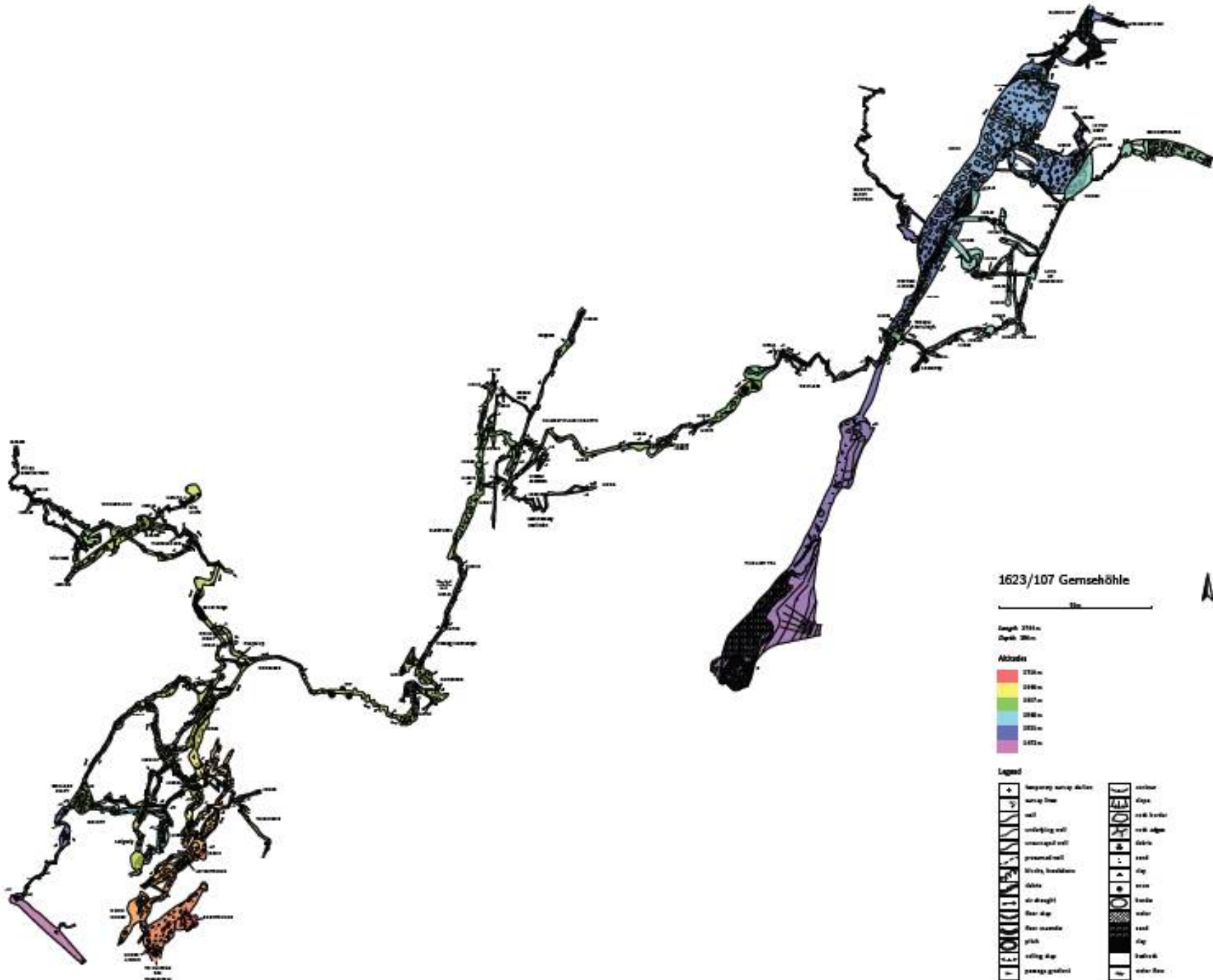


Smooth sandy bottom









1623/107 Gemshöhle

0 10 20m

Length: 2714m  
Depth: 70m



Legend

|  |                          |  |              |
|--|--------------------------|--|--------------|
|  | temporary survey station |  | vertical     |
|  | survey line              |  | cliff        |
|  | wall                     |  | rock barrier |
|  | underlying wall          |  | rock ledge   |
|  | overgrown wall           |  | cliff        |
|  | projected wall           |  | rock         |
|  | Windy, hazardous         |  | cliff        |
|  | cliff                    |  | rock         |
|  | air draught              |  | rock         |
|  | low dip                  |  | rock         |
|  | low passage              |  | rock         |
|  | pitch                    |  | cliff        |
|  | steep dip                |  | rock         |
|  | passage gradient         |  | rock         |









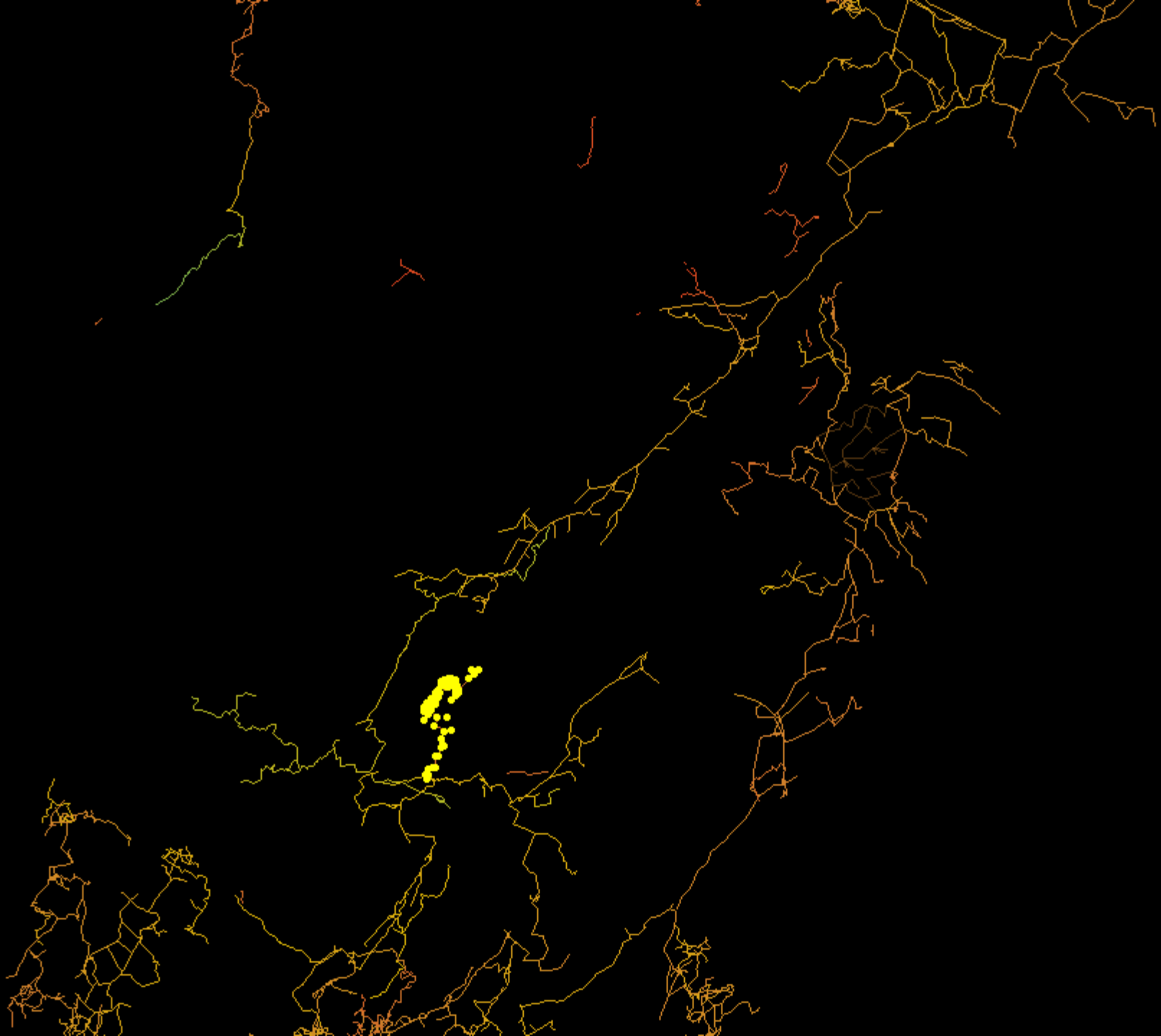


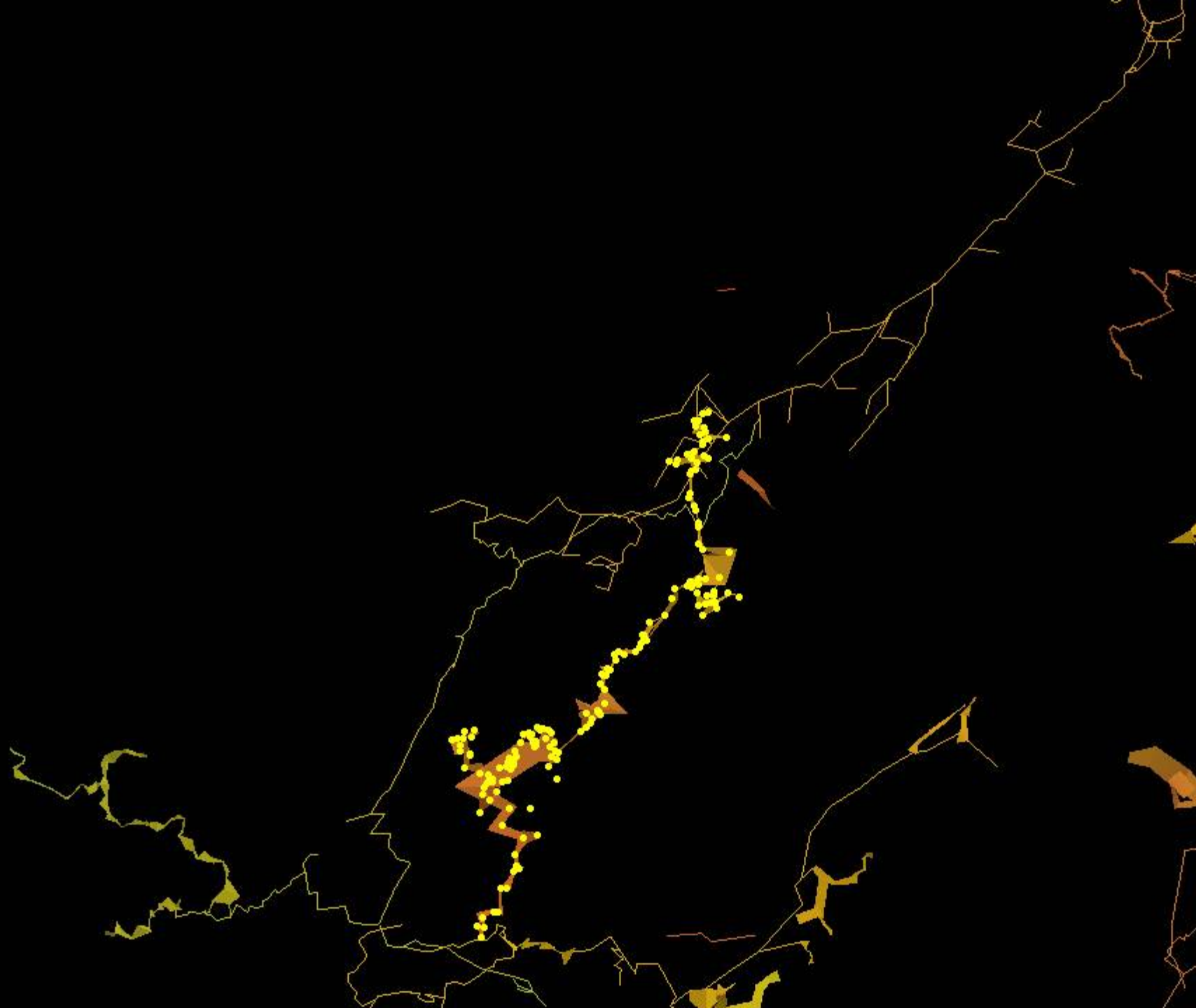


# Donner und Blitzen höhle

- Explored by CUCC 1988 – CJD & Mike the Animal
- Was in the gap between Kaninchenhoehle & Stellerweg
- ARGE checked in 2014 & 2015
- New extensions should connect with Gemsehöhle, but.....









# 2015 in Numbers

- 6 week expo
- Over 36 cavers
- Over 5km surveyed
- SMK system over 114km long
- Too many leads for next year



# Thanks to

- Photographers
- GPF
- Sponsors:
  - CurTec
  - Sacla
  - Tunnocks
  - Weather Writer
  - Warmbac
- Matt Watson

